

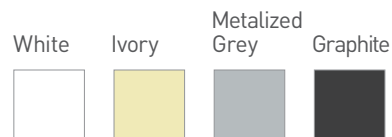
KLIP SYSTEM

Rollease Acmeda's KLIP traditional style awning features a vertical design best suited for open style wall applications, offering up to 4m projections.

FEATURES

- Manual or motorised system.
- Tested to withstand winds up to 50km/h.
- Finalist at R+T Innovation Prize 2009 in Stuttgart, Germany.
- Can achieve up to 14m widths & 4m projection.
- Die cast aluminium brackets and supports.
- Stainless Steel fixings.
- Colour matched components.
- Offering between 5 to 65 degree inclination.
- Patented design.

COLOUR RANGE



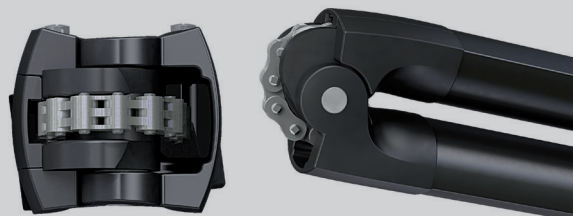
Leading innovator of precision hardware and automated shade solutions.
USA | AUSTRALIA | EUROPE rolleaseacmeda.com

UNIQUE ARM SYSTEM

The class performing DAT (Dynamic Arm Torsion) system design ensures optimum chain & fabric damage prevention. The awning arms open and close without touching fabric during operation. The DAT System features only stainless steel screws, bolts and pins and is the most advanced choice for your awnings.

FEATURES

- Strong and secure eight link stainless steel chain.
- Outstanding mechanical performance.
- Fabric damage prevention.
- Teflon coated for marine grade protection.
- Arms can be adjusted to tilt in single degree increments.



KLIP open



KLIP closed

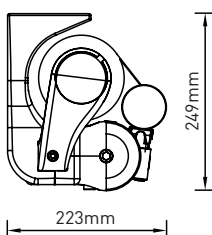


FABRIC PROTECTING HOOD optional



FIXING DIMENSIONS

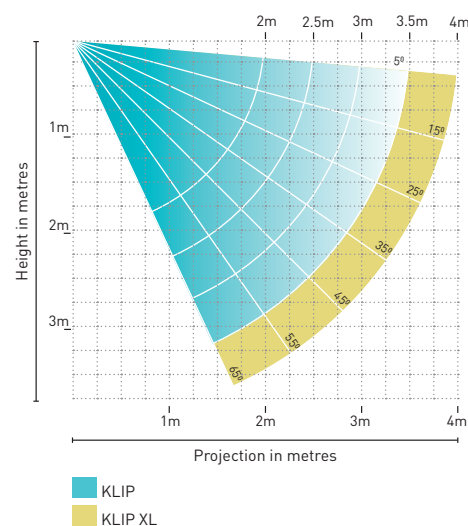
WALL/TOP FIX with folded arms
5° incline



MAX AWNING DIMENSIONS

Max width: 14m
Max projection: 4m

ARM PROJECTION



YOUR ROLLEASE ACMEDA AWNINGS SUPPLIER:



D&C Design Pty Ltd
Unit 1, 39 Howley Rd
Notting Hill, 3168
Victoria, Australia
T: +61 3 9826 5133
E: office@dandcdesign.com.au
www.dandcdesign.com.au

Independantly tested and approved by



R+T 2009 INNOVATION PRIZE **NOMINEE**